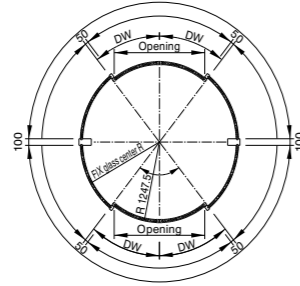
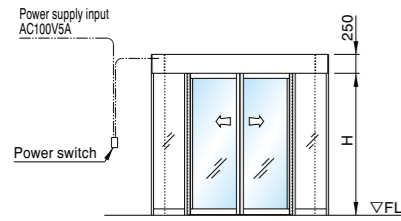


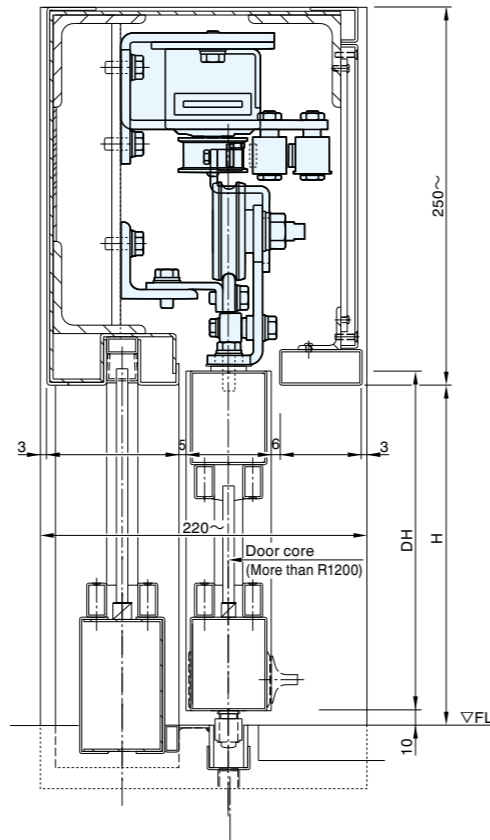
ROUND DOOR

ROUND DOOR (RH-550R, RH-660R)

BI-PARTING (WHOLE ROUND)

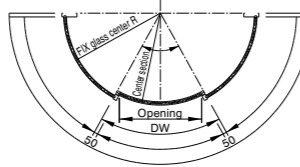
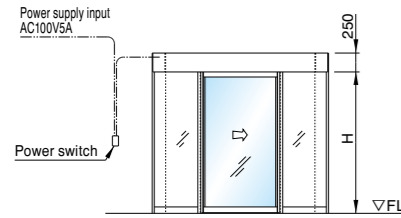


Dimension is indicated by m/m unit

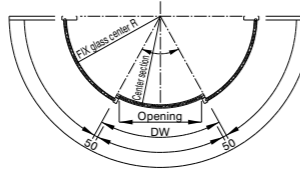
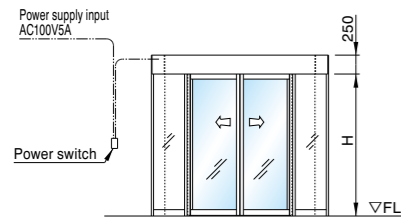


- Standard radius is 1500mm.
- Other dimensions in radius is available at option.

SINGLE (HALF ROUND)



BI-PARTING (HALF ROUND)



EXAMPLE LAYOUT



NOTE

- Prepare and install transformer according to local voltage.
- Prepare and install activating switch.
- Prepare and install safety beam.

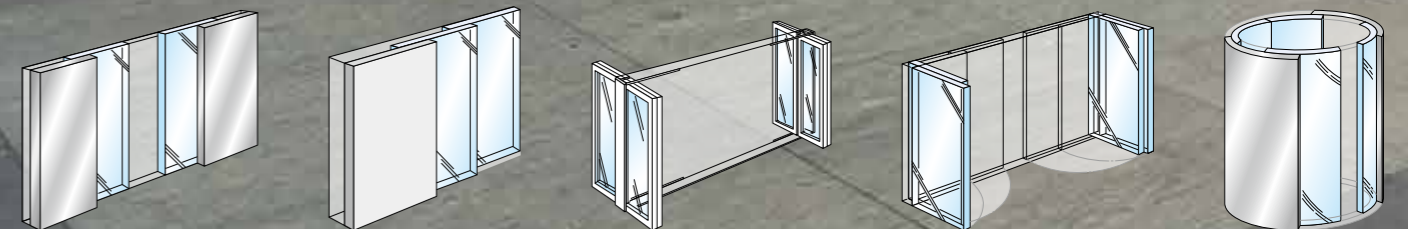
DISTRIBUTED BY

RYOBI LIMITED

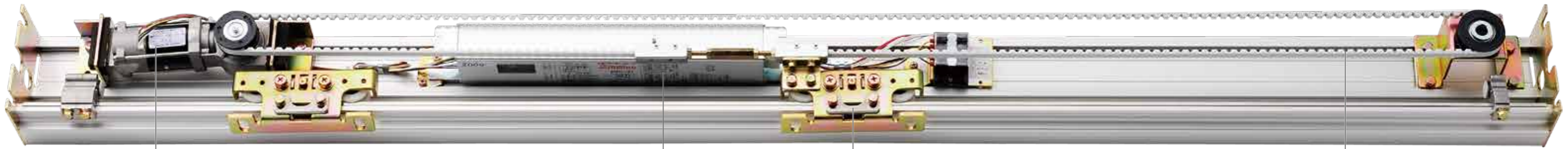
5-2-8 Toshima, Kita-ku Tokyo 114-8518, Japan
Tel. 81-3-3927-5536 Fax. 81-3-3927-5527



AUTOMATIC DOOR OPERATOR



FEATURE



DC BRUSHLESS HYPOID - GEAR MOTOR

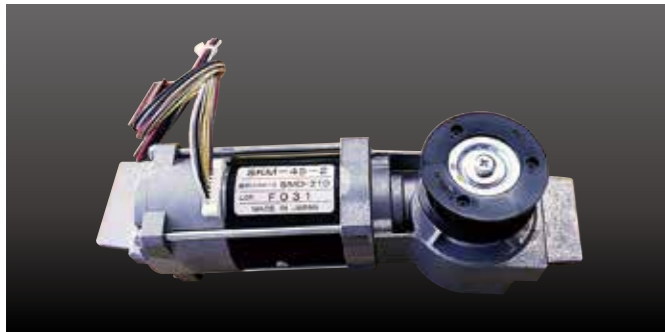
MICROCOMPUTER CONTROLLER

DOUBLE ROLLER HANGER

URETHANE BELT

• DC BRUSHLESS HYPOID-GEAR MOTOR

Adoption of DC brushless Hypoid-Gear Motor contributes to silent and smooth operation, resulting in speedy opening and closing cycles and reverse actions, and remarkable durability. Recommendable for heavy traffic entrance.



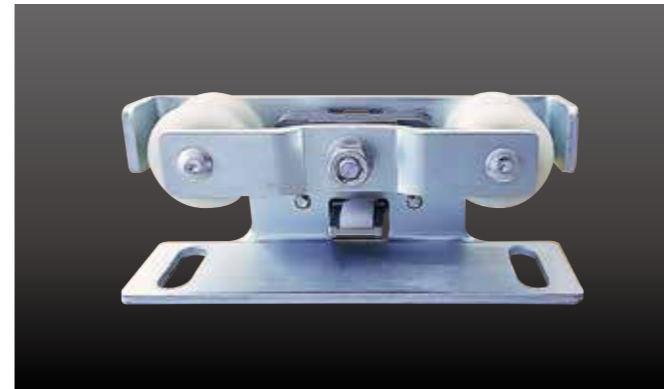
• MICROCOMPUTER CONTROLLER

Opening stroke and speed, damping speed, and brake force can be adjusted by switch on controller unit or optional remote controller unit. Learning operation provides the precise door opening and closing stroke. Automatic setting of brake, safety reverse action, safety stop function ensures high level of security at entrance. Not only such detailed setting but also anomaly detection display working as troubleshooting realize comfortable and safety operation, and easier maintenance.



• DOUBLE ROLLER HANGER

Double rollers and right-and-left symmetrical roller center ensure high durability, stable actions, and ease in workability. The door alignment can be adjusted simply by hanging bracket lock bolt (M8×18).



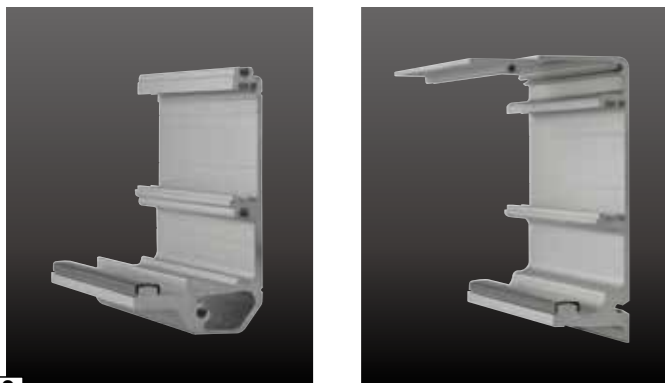
• URETHANE BELT

Adoption of urethane belt contributes to longer durability and cleaner operation. Urethane belt is more durable and higher wear-resistance. Generation of mine dust can be minimized against standard rubber belt.



• STAINLESS HANGER RAIL COVER (OPTION)

Optional stainless hanger rail cover on aluminum frame supports to remarkable durability of 4,000,000 operations. Recommendable for heavy traffic entrance.



2

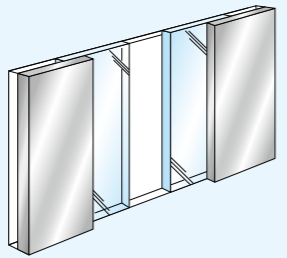
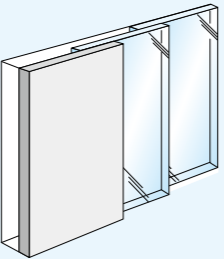
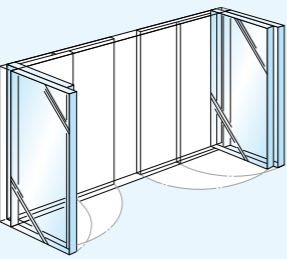
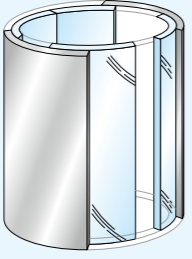
• REMOTE CONTROLLER (OPTION)

Opening stroke and speed, damping speed, and brake force can be adjusted by the remote controller unit.

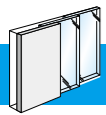


3

MODEL CHART

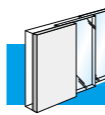
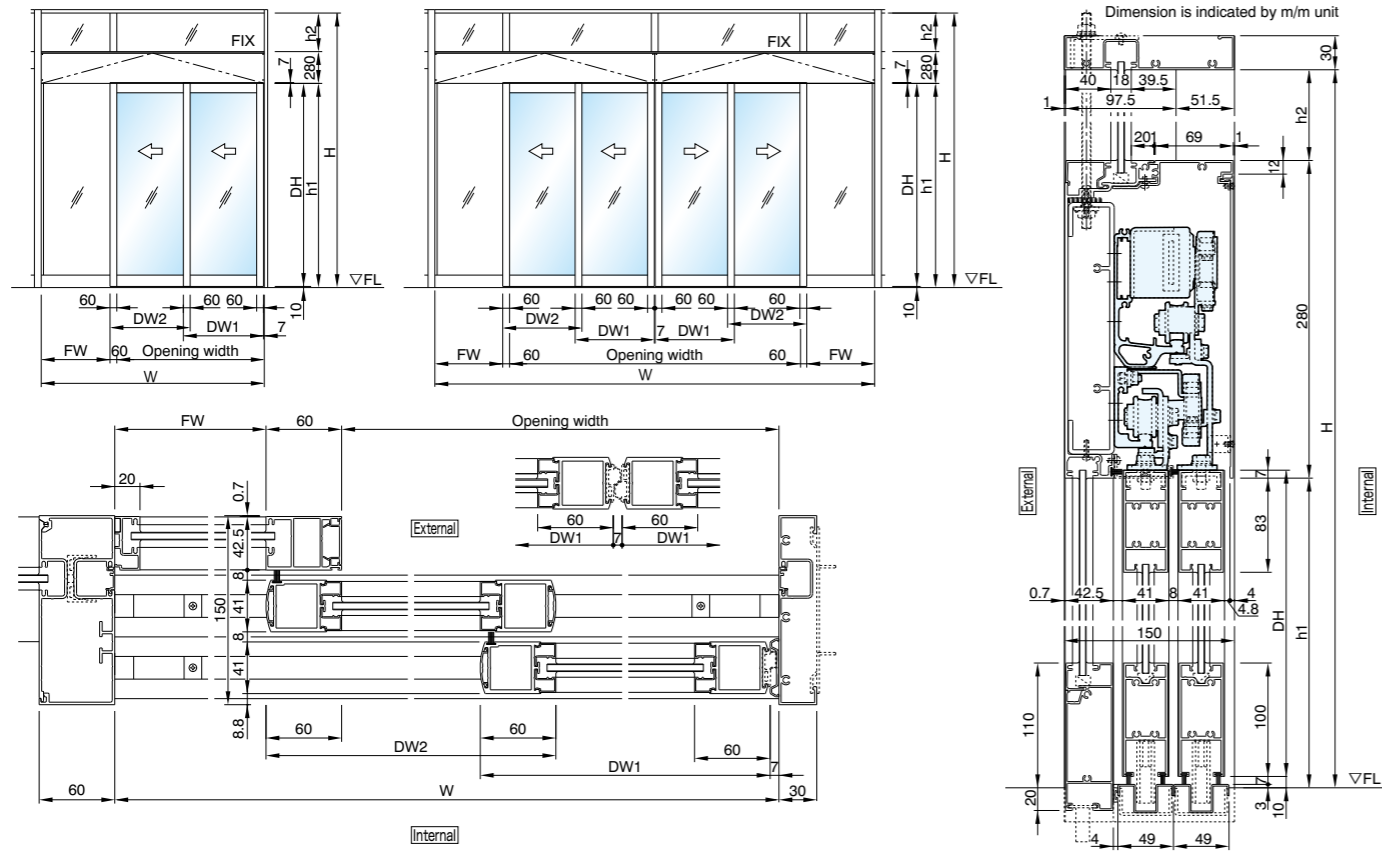
Type of Door		Description		
Sliding Door		Model	Surface mount Concealed mount	
		Maximum Door Weight		
		Minimum Applicable Door Width		
		Voltage		
		Opening Speed		
		Closing Speed		
		Hold-Open Time		
		Power Consumption		
		Applicable Temperature		
		Insulation Resistance		
		Dielectric Strength		
		Manual Opening/Closing Force		
		Maximum Door Stroke		
Telescopic Door	Double Slide	Model		
		Maximum Door Weight		
		Minimum Applicable Door Width		
		Voltage		
		Opening Speed		
		Closing Speed		
	Triple Slide		Model	
			Maximum Door Weight	
			Minimum Applicable Door Width	
			Voltage	
			Opening Speed	
			Closing Speed	
Quad Slide		Model		
		Maximum Door Weight		
		Minimum Applicable Door Width		
		Voltage		
		Opening Speed		
		Closing Speed		
Space Make Door		Model	Surface mount Concealed mount	
		Maximum Door Weight		
		Applicable Door Width		
		Voltage		
		Opening Speed		
		Closing Speed		
		Hold-Open Time		
		Power Consumption		
		Applicable Temperature		
		Insulation Resistance		
		Dielectric Strength		
		Manual Opening/Closing Force		
		Maximum Door Stroke		
Round Door		Model		
		Maximum Door Weight		
		Minimum Applicable Door Width		
		Voltage		
		Opening Speed		
		Closing Speed		
		Hold-Open Time		
		Power Consumption		
		Applicable Temperature		
		Insulation Resistance		
		Dielectric Strength		
		Manual Opening/Closing Force		
		Maximum Door Stroke		

Light Duty		Medium Duty		Heavy Duty				Ultra Heavy Duty	
Single	Bi-Parting	Single	Bi-Parting	Single	Bi-Parting	Single	Bi-Parting	Single	Bi-Parting
RL-100	RL-200	RM-300	RM-400	RH-500	RH-600	N/A	N/A	N/A	N/A
RL-110	RL-220	RM-330	RM-440	RH-550	RH-660	RHS-550	RHS-660	RSA-770	RSA-880
60Kg×1	40Kg×2	100Kg×1	75Kg×2	120Kg×1	120Kg×2	150Kg×1	150Kg×2	250Kg×1	250Kg×2
500mm		500mm		500mm		800mm	650mm	900mm	700mm
AC100V±10% 50/60Hz		AC100V±10% 50/60Hz		AC100V±10% 50/60Hz		AC100V±10% 50/60Hz		AC100V±10% 50/60Hz	
100 - 500mm/s		100 - 500mm/s		100 - 500mm/s		100 - 500mm/s		100 - 500mm/s	
100 - 350mm/s		100 - 350mm/s		100 - 350mm/s		100 - 350mm/s		100 - 350mm/s	
0 - 9S		0 - 9S		0 - 9S		0 - 9S		0 - 9S	
80W		90W		140W		200W		220W	
-10 - +40°C		-10 - +40°C		-10 - +40°C		-10 - +40°C		-10 - +40°C	
DC500V 100MΩ		DC500V 100MΩ		DC500V 100MΩ		DC500V 100MΩ		DC500V 100MΩ	
AC1500V 1MIN		AC1500V 1MIN		AC1500V 1MIN		AC1500V 1MIN		AC1500V 1MIN	
Less than 100N		Less than 100N		Less than 100N		Less than 100N		Less than 150N	
10M		10M		10M		10M		10M	
N/A	N/A	RM-300S2	RM-400W2	RH-500S2	RH-600W2	N/A	N/A	RS-770S2	RS-880W2
		75Kg×2	50Kg×4	100Kg×2	60Kg×4			140Kg×2	100Kg×4
		500mm		500mm				900mm	
		AC100V±10% 50/60Hz		AC100V±10% 50/60Hz				AC100V±10% 50/60Hz	
		100 - 500mm/s		100 - 500mm/s				100 - 500mm/s	
		100 - 350mm/s		100 - 350mm/s				100 - 350mm/s	
		0 - 9S		0 - 9S				0 - 9S	
		90W		140W				220W	
		-10 - +40°C		-10 - +40°C				-10 - +40°C	
		DC500V 100MΩ		DC500V 100MΩ				DC500V 100MΩ	
		AC1500V 1MIN		AC1500V 1MIN				AC1500V 1MIN	
		Less than 100N		Less than 100N				Less than 150N	
10M		10M		10M					
N/A	N/A	RM-300S3	RM-400W3	RH-500S3	RH-600W3	N/A	N/A	RS-770S3	RS-880W3
		50Kg×3	40Kg×6	70Kg×3	50Kg×6			100Kg×3	75Kg×6
		500mm		500mm				900mm	
		AC100V±10% 50/60Hz		AC100V±10% 50/60Hz				AC100V±10% 50/60Hz	
		100 - 500mm/s		100 - 500mm/s				100 - 500mm/s	
		100 - 350mm/s		100 - 350mm/s				100 - 350mm/s	
		0 - 9S		0 - 9S				0 - 9S	
		90W		140W				220W	
		-10 - +40°C		-10 - +40°C				-10 - +40°C	
		DC500V 100MΩ		DC500V 100MΩ				DC500V 100MΩ	
		AC1500V 1MIN		AC1500V 1MIN				AC1500V 1MIN	
		Less than 100N		Less than 100N				Less than 150N	
10M		10M		10M					
N/A	N/A	N/A	N/A	N/A	N/A	N/A	N/A	RS-770S4	RS-880W4
								75Kg×4	50Kg×8
								900mm	
								AC100V±10% 50/60Hz	
								100 - 500mm/s	
								100 - 350mm/s	
								0 - 9S	
								220W	
								-10 - +40°C	
								DC500V 100MΩ	
								AC1500V 1MIN	
								Less than 150N	
10M									
N/A	N/A	N/A	N/A	N/A	N/A	N/A	N/A	RSMH-300S	RSMH-400W
								RSMH-330S	RSMH-440W
								100Kg×1	75Kg×2
								735mm - 1250mm	
								AC100V±10% 50/60Hz	
								100 - 500mm/s	
								100 - 350mm/s	
								0 - 9S	
								90W	
								-10 - +40°C	
								DC500V 100MΩ	
								AC1500V 1MIN	
Less than 100N									
10M									
N/A	N/A	N/A	N/A	N/A	N/A	N/A	N/A	RSMH-600W	RSMH-660W
								100Kg×2	
								735mm - 1250mm	
								AC100V±10% 50/60Hz	
								100 - 500mm/s	
								100 - 350mm/s	
								0 - 9S	
								140W	
								-10 - +40°C	
								DC500V 100MΩ	
								AC1500V 1MIN	
								Less than 100N	
10M									
N/A	N/A	N/A	N/A	N/A	N/A	N/A	N/A	RH-550R	RH-660R
								120Kg×1	120Kg×2
								800mm	
								AC100V±10% 50/60Hz	
								100 - 500mm/s	
								100 - 350mm/s	
								0 - 9S	
								140W	
								-10 - +40°C	
								DC500V 100MΩ	
								AC1500V 1MIN	
								Less than 100N	
10M									



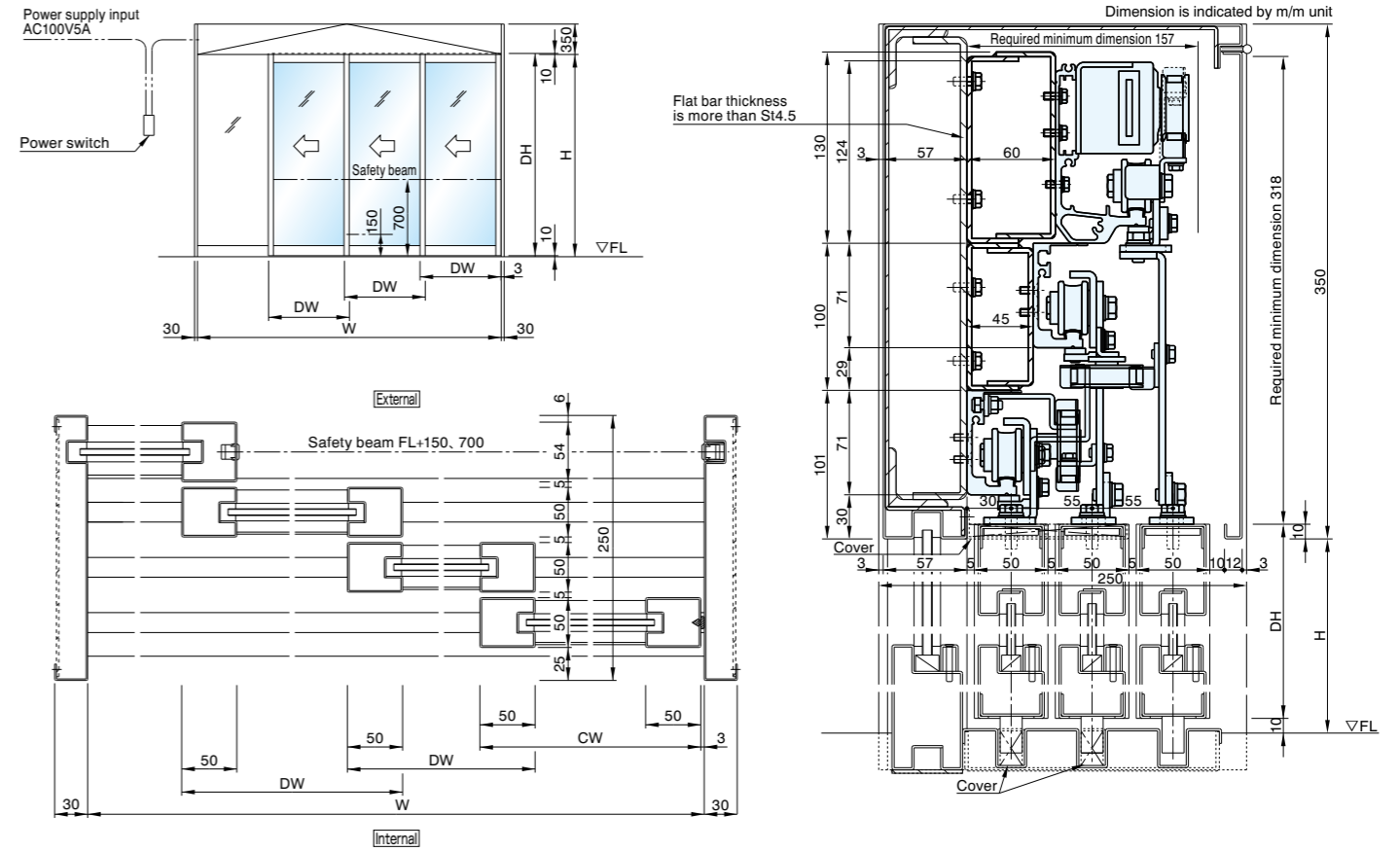
TELESCOPIC DOOR

DOUBLE SLIDING TELESCOPIC DOOR (RM-300S2, RM-400W2, RH-500S2, RH-600W2)

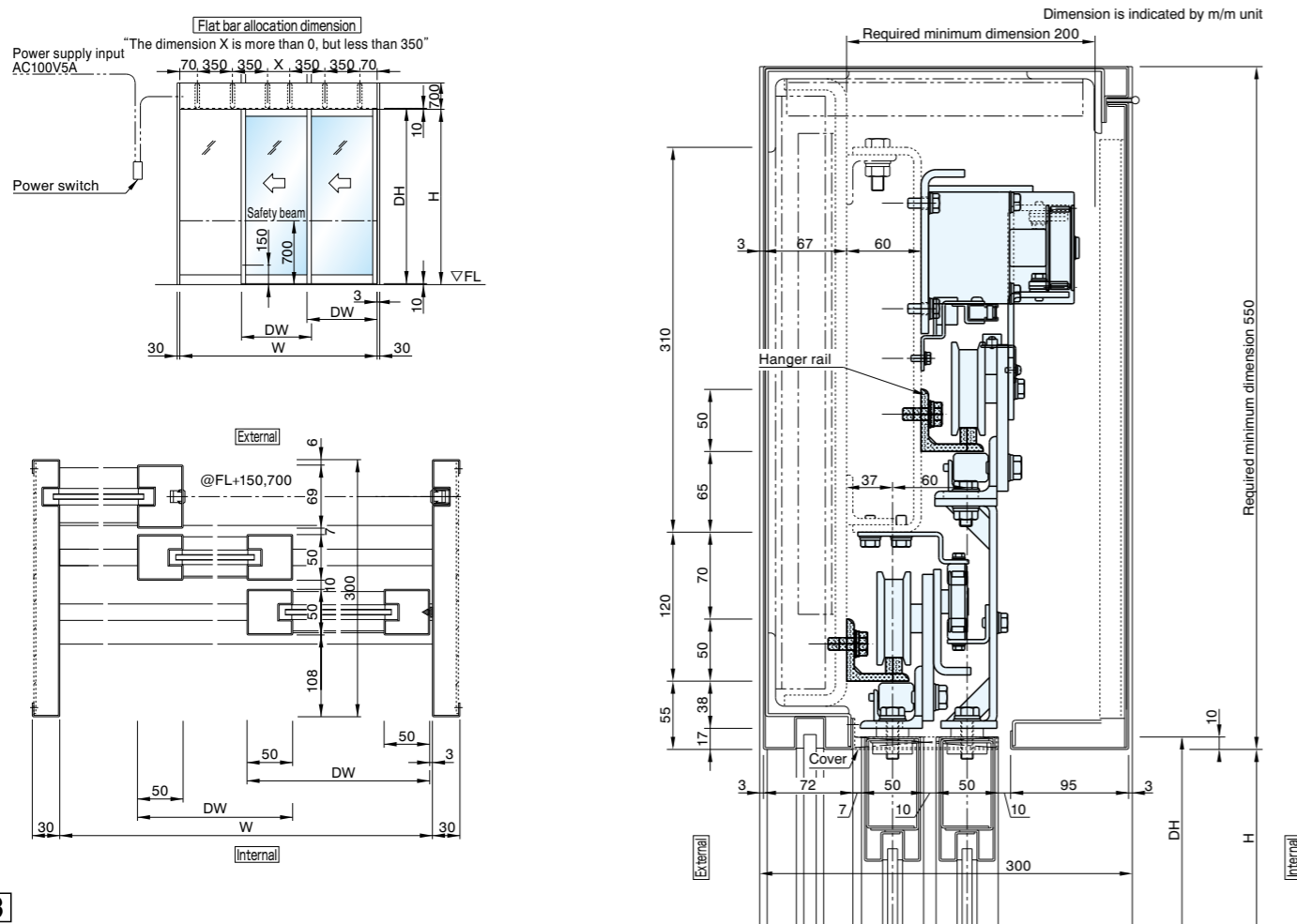


TELESCOPIC DOOR

TRIPLE SLIDING TELESCOPIC DOOR (RM-300S3, RM-400W3, RH-500S3, RH-600W3)



DOUBLE SLIDING TELESCOPIC DOOR (RS-770S2, RS-880W2)



TRIPLE SLIDING TELESCOPIC DOOR (RS-770S3, RS-880S3)

